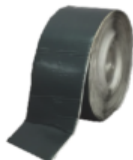


BLACK JACK

Black-Jack is an all-round miracle sealant which can be used on any surface.



What is Black Jack?

Black Jack is an all-round miracle sealant which can be used on any surface, is simple to apply and remains flexible.

Black-Jack is a one-stop wonder for all kinds of repairs from cracked gutters to leaking waste pipes.

How does Black Jack work?

The unique formulation and non-corrosive foil backing means Black Jack is suitable for a range of purposes. Simple to use and apply, Black-Jack bonds with any surface.

Black Jack Technical Information?

Shelf life: Virtually indefinite
Tensile adhesion: 147.5kN/m²
Compressive strength (20%):
49.2kN/m²
Resistant to: UV, water vapour,
dilute acids and alkali
Temperature: -40 to +90 C

Non-volatile content: 100%
Thickness: 1.5mm

Always ensure that precautionary measures found in the MSDS sheet for Black Jack are read and followed before use

Key Features and Benefits of Black Jack?

- Simple to apply – no mess, no waste.
 - Apply Black Jack to damp surfaces.
 - Superb adherence properties on a huge range of substrates.
 - Stays flexible.
 - No mixing required.
 - Indefinite shelf life.
 - No need for special equipment.
-
- **Use Black-Jack for a multitude of tasks including:**
 - Fixing cracked or leaking guttering or waste pipes.
 - Sealing around roof furniture
 - Sealing joints on parapet walls, etc...

IMG Distributors Riverside Ind. Estate, Fazeley, Tamworth, Staffordshire B78 3RW.

The IM Group utilizes a process of continuous product improvement for all of our products. While the IM Group strictly adhere to our products specifications, we routinely implement product improvements. Therefore, please contact us for our most current product specifications. The IM Group warrants the quality of this product when used according to directions. Apply protective coatings per Company Standards. User shall determine suitability of product for use and assumes all risk. The seller will not accept liability for more than product replacement.